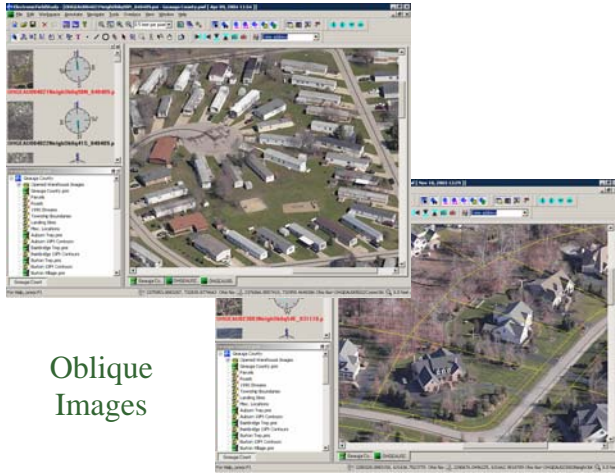
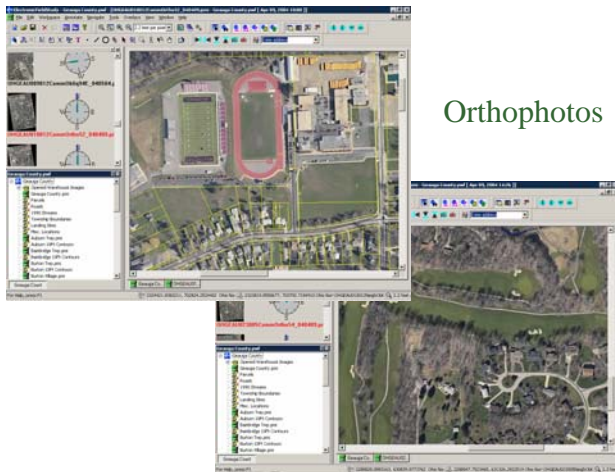


Pictometry in Geauga County



Oblique Images

- ❖ Appraisal & quality control tool used by the Auditor's Office
- ❖ Used by numerous county offices and township zoning departments
- ❖ Helpful accomplice to the County Sheriff's 911 system
- ❖ Resource used by emergency planners and fire & police departments around Geauga County



Orthophotos

Access Geauga, along with all other County Auditor information, can be found on the main menu at www.auditor.co.geauga.oh.us or at www.auditor.co.geauga.oh.us/ag

Pictometry is an in-house only application and is not available to the public. For Pictometry information please see an Auditor's Office staff member.

For additional GIS maps and downloadable data navigate to www.auditor.co.geauga.oh.us/gis



Geauga County Auditor's Office

Location:

Courthouse Annex
231 Main Street, Suite 1A
Chardon, OH 44024-1293

Phone:

(440) 285-2222, 564-7131, 834-1856 Ext. 1600
(440) 279-1600 - Direct Line

E-Mail:

auditor@co.geauga.oh.us

Geauga County GIS

Location:

Opera House
211 Main Street, 3rd Floor

Phone:

(440) 285-2222, 564-7131, 834-1856 Ext. 1620
(440) 279-1620 - Direct Line

E-Mail:

gis@co.geauga.oh.us

Geauga County, Ohio

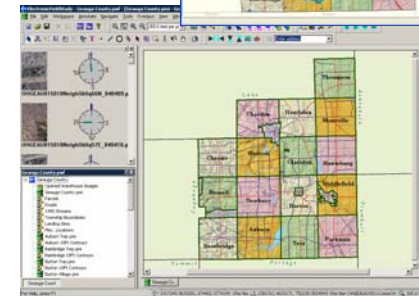
Geographic Information Systems

Frank J. Gliha



Geauga County Auditor

Access Geauga



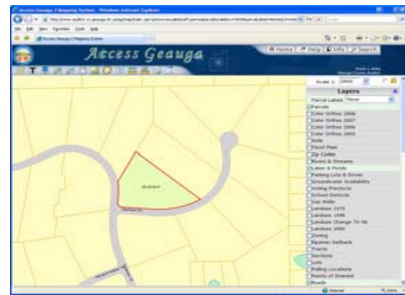
What is GIS?

Linking locations to information is a process that applies to many aspects of decision making in governments, businesses, schools, and emergency services. Choosing sites, planning networks, responding to emergencies, and redrawing county or parcel boundaries are all situations associated with geography. The most effective way to analyze and associate data with geography is to use geographic information systems.

Geographic information systems, or GIS, is a computer technology that uses an analytic framework for managing and integrating data. The technology of GIS encompasses several disciplines including mathematics, cartography, and most importantly, geography. GIS simply links geographic information (where things are) with descriptive information (what things are). Geographic information systems are capable of.....

- ✦ Linking attributes from a database to digital maps, such as buildings to parcels or names to streets
- ✦ Helping police and fire departments solve problems that arise during emergencies
- ✦ Displaying information in layers or themes so users can turn on or turn off features depending upon the information required
- ✦ Displaying current and up-to-date information that can reach the entire public

Information Available on Access Geauga



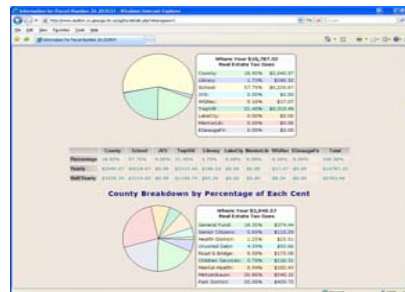
County,
Township,
& Parcel Maps

- ◆ Parcel Improvements
- ◆ Building & Driveway Permits
- ◆ Building Sketch Information
- ◆ Orthophoto Images
- ◆ Reval Information
- ◆ Sales Information

Property
& Owner
Information



- ◆ Property Record Cards
- ◆ Value History Information
- ◆ Tax Bills
- ◆ Ballot Issues
- ◆ Scanned Paper Maps
- ◆ Advanced Searches



Tax Details

Benefits to Geauga County

- + Provide county departments and the public with accurate information that is easily accessible
- + Cost-efficient way of providing maps, analyzing geographic data, and verifying information
- + Improves coordination between county organizations
- + Allows for more accurate and equitable property appraisals
- + Calculates CAUV (Current Agricultural Use Valuation) based upon soil types and acreages
- + Enhances Geauga County's 911 emergency services
- + Provides a great tool for Homeland Security
- + Helps provide effective health care services management
- + Provides Geauga school districts with transportation needs
- + Integrates older maps and scanned records for quick retrieval